



SolidSteel

a complete steel construction package for OneSpace Designer

- You are a steel engineer and create complex, curved, or beveled constructions?
- You are an equipment engineer and create stand constructions for your technical installations?
- You are a mechanical engineer and create assembly and operation platforms for your machines?

Use SolidSteel with your structural steelworks quickly and effectively to create, all the same whether it concerns large, small, simple, or complex constructions!

Profile mounting and processing

SolidSteel offers you a multitude of profile shifting functions. You work as a technical designer as you normally do:

- ◆ Select profile from table
- ◆ Set start and end points - done!

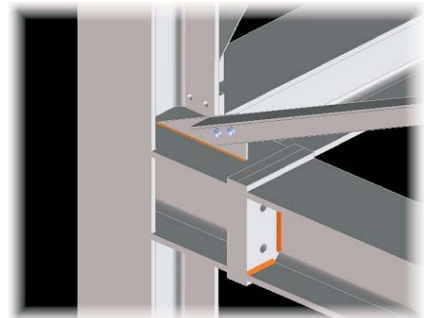
Of course the start and end points can be entered in various types and ways to, e.g. by specification of direction and length or a limiting surface. Profiles can be placed exactly the same as before into an existing construction with raster-created guide lines. Even simple or spiral bent profiles are possible.

The processing options of the profiles are just as varied.

In the simplest case, it concerns itself with functions for cutting off profiles at other components or surfaces or for extending to other components - the profiles can be, of course, beveled and arranged arbitrarily to each other.

For processings typical for steel structures, such as miter cuts, releases, or fitting profiles into others, functions are available that complete the handling with a few mouse clicks.

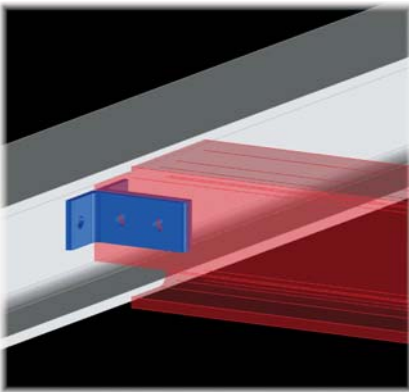
For all special profiles, e.g. edge profiles, assembled profiles, or foreign profile series, the functions of SolidTools are available and included in the SolidSteel service range.



SolidSteel

a complete steel structure package for OneSpace Designer

Connections, modules, 2D drawings



For the production of connections typical to steel structures, there is a multitude of functions reducing the task to a few mouse clicks. The spectrum of options ranges from simple geometric modifications such as length cuts, bevel cuts, or releases, to complex connections such as head plates or transverse force-stressed brackets. These connections can either be freely defined or selected from standard tables (e.g. DAST).

Further options arise from the integration of program parts to the automatic production of whole modules. Accordingly, some standard programs are provided, e.g. for the production of shed frames. After the input of some basic data, such as shed length, width, height, profiles used, etc., The framework is automatically designed with all components and connections.

SolidSteel supports the automatic drawing preparation of OneSpace Designer and enables simple and fast creation of any views and cuts. You, as the user, determine the appearance of the drawings or whether they involve individual part plans or assembly drawings. Changes in the 3D model are transferred automatically to the drawings.

"SolidSteel offers support for the entire steel structure processing chain:

- Profiles
- Connections
- Modules
- 2D Drawings
- Parts lists

The construction is fast and effective"

