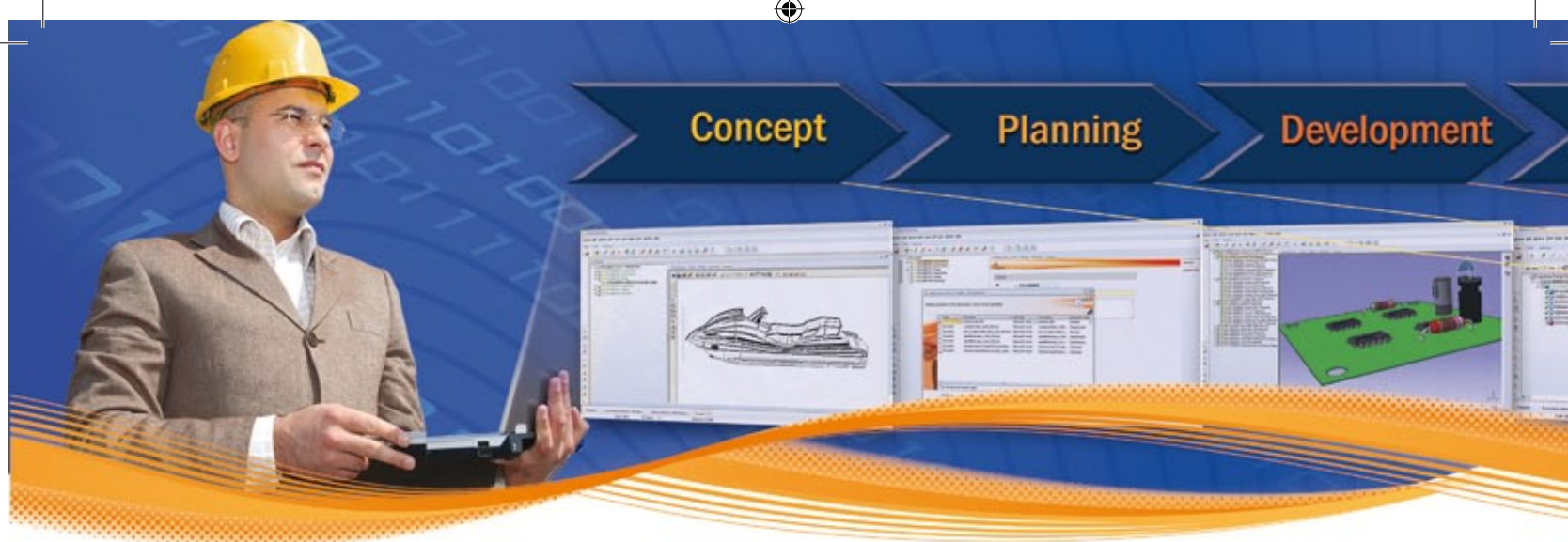


SmarTeam Engineering Express



prod. planning
test & approval
development
planning
concept



Like most mid-market manufacturers, you recognize the challenges of managing day-to-day engineering processes. You want to avoid miscommunication, errors and delays, especially when managing many products simultaneously. As the product development processes are more complex and customers more demanding, you realize the need for a cost-effective and quick-to-implement item-centric Product Lifecycle Management (PLM) engineering solution.

Using **SmarTeam Engineering Express**, ENOVIA SmarTeam helps you significantly accelerate your product launch and prevent numerous, lengthy and costly change management processes. Roll out in a fraction of the time required by more cumbersome solutions: just let your teams deploy best practices and an out-of-the-box solution that simplifies their day-to-day work, in order to reduce duration and volume of engineering changes!

Express Your Vision

ENOVIA SmarTeam lets you launch your products as quickly and cost-effectively as possible using item-centric BOM management. Your customers can enjoy higher productivity at a lower cost while achieving and maintaining the highest quality and standards, and without losing sight of your customers' requirements. ENOVIA SmarTeam offers **SmarTeam Engineering Express**, a quick and affordable PLM solution that overcomes the complexity of product development processes. A simple and tailorable out-of-the-box PLM system, the solution is specifically geared to the mid-market, applying top-down engineering methodology in a multi-CAD environment, such as CATIA, and electronic CADs; deploying best practices to streamline and accelerate product development. With SmarTeam Engineering Express, you can benefit from an end-to-end solution, from concept to manufacturing, that helps you implement your solution quickly, and as easily as one-click.

Seeing you through each and every stage of each and every product lifecycle.

SmarTeam Engineering Express provides a prepackaged solution that contains item and BOM management, document management, electronic CAD support, quick data creation and retrieval, and much more. Your entire product team can concurrently use the simple step-by-step methodology and tools through each and every stage of each and every product lifecycle.

How will you benefit?

- **Improve understanding and communication** – among different disciplines within and beyond the company.
- **Get the right data to the right people at the right time** – regardless of your role within or beyond the company and regardless of the multitude and diversity of data types (such as engineering and design data).
- **Simple to understand and easy to use** – a built-in solution that has been designed to fit mid-market customers with minimal disruption to day-to-day operations.
- **Plug-and-play functionality** – by closing an end-to-end, concept to manufacturing collaborative engineering solution with easy, built-in methodology. Compliance with engineering standards raises product and process quality.

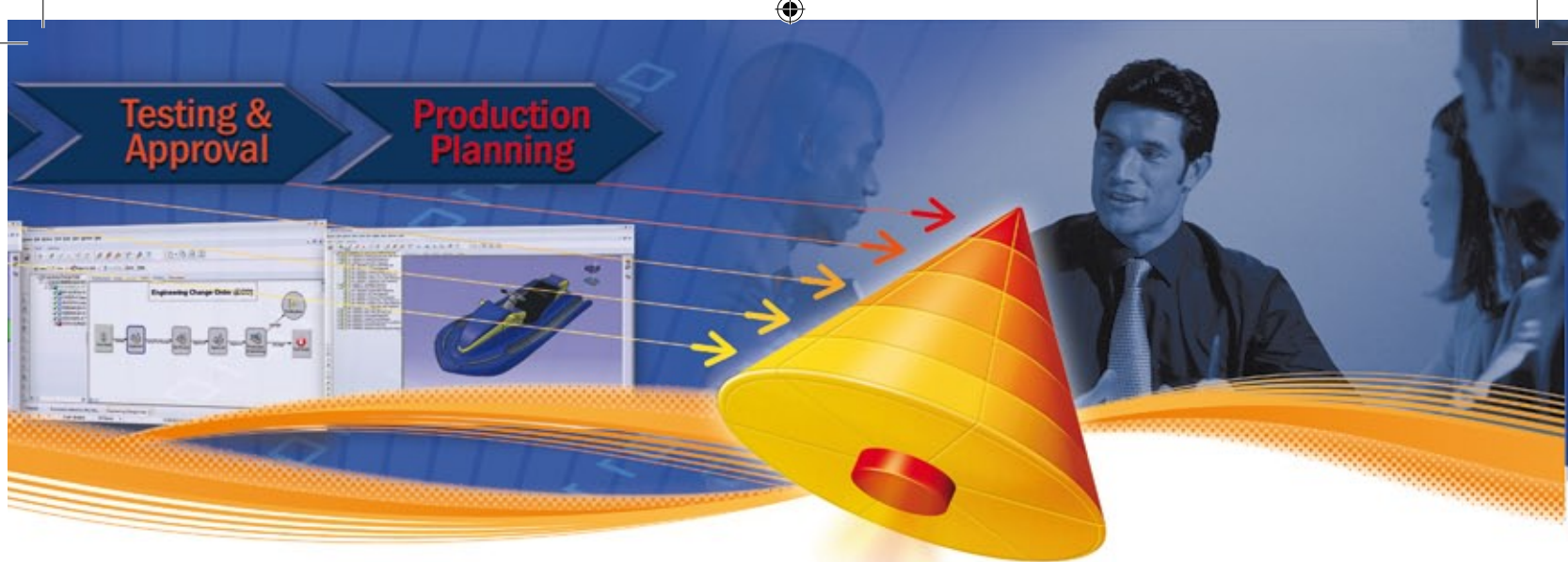
- **Low total cost of ownership** – Using Microsoft technologies including .NET, ENOVIA SmarTeam provides a huge benefit for mid-market organizations that do not have to buy additional and costly software and hardware as other PLM solutions require.

- **Gain a base for an end-to-end PLM solution and grow as you go** – a scalable solution that integrates with other ENOVIA SmarTeam Express packages, such as SmarTeam Design Express on the same platform. Out-of-the-box yet tailorable, SmarTeam Engineering Express is the only solution that is customizable and extendible according to customers' growing PLM needs.

SmarTeam Engineering Express is based on ENOVIA SmarTeam's Collaborative Engineering offering. With a prepackaged database and a simplified user interface, you can benefit from a solution that delivers best practices in a multi-CAD world.

"Now [with ENOVIA SmarTeam] we can handle multiple options within a single BOM, increasing BOM accuracy... ECOs are distributed in a much shorter time and their accuracy is much higher, letting us release new products to market much faster."

YongSeok Choi, Manager of Systems Operations Section, Corecess



How do you take the express route for your product launch?

SmarTeam Engineering Express speeds up your product launch process by using a preconfigured solution for engineering and design departments, and mid-market manufacturers. SmarTeam Engineering Express deploys best practices of working with Engineering BOM (E-BOM) starting from concept, through development, testing and eventually creation of the Manufacturing BOM (M-BOM). Engineering Express recognizes the importance of multi-CAD discipline, where not only Mechanical CADs are in place, but also Electronic CAD systems. Simplify your day-to-day product development processes by adopting ENOVIA SmarTeam's Express solution.

Comprehensive

End-to-end scenario from concept to manufacturing

Traditional processes cause miscommunication, errors, and delays, especially when managing many products simultaneously. Not with ENOVIA SmarTeam – even while working within a complex environment, we've proven how to manage several linear processes simultaneously and comprehensively. ENOVIA SmarTeam takes your products from concept through manufacturing with a PLM solution that optimizes products' lifecycles in all of their stages: Concept, Planning, Development, Testing; Production Planning, to Manufacturing.

Key Features

- **Item, BOM and Document Lifecycle Management**
- **Preconfigured data base and role functionality** to support methodology with a simplified user interface
- **Embedded methodology**
- **Change Management and Release Processes** – a controlled environment to manage engineering changes and processes
- **Enhanced data exchange** – with ERP as well as external manufacturers and vendors
 - Items/BOM import/export from/to ERP
 - Items/BOM import from Excel sheet
- **Standard Items and Manufacturer Items Management**

Concentrated

Top-down engineering

With this method, the product development starts from top levels drilling down into the lower levels, bringing the concept and product overview to the team first, before the design phase. Later, the concept is broken down into different components and then designed from the bottom up. This concept helps prevent your team from losing focus and lets you concentrate on your devised plan.

Key Advantages

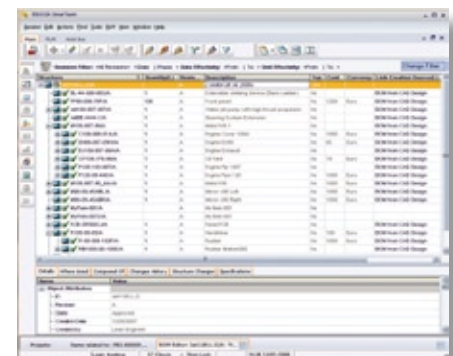
- **Quick to implement** – within a fraction of the time required by other solutions so that you can avoid lengthy and cumbersome processes.
- **Easy to learn** – offers a rapid Return on Investment using MS Project Plan, implementation and methodology guides, on-line help and one-click installation.
- **Improved accuracy, data consistency and configuration control** – for effective and fast reuse of existing data.
- **Accelerated product launches** – detect and prevent errors early and reduce duration and volume of engineering changes: higher productivity, lower costs.
- **Supporting multi-CAD disciplines** – mechanical (through SmarTeam Design Express) and electronic CAD systems. The combined solution strengthens design and engineering processes.
- **Improve collaboration** – using centralized product data.

Collaborative

Concurrent Engineering

Members of your team work from the Engineering BOM (E-BOM) from the start, carrying out their tasks both individually and concurrently, and updating the items that make up the E-BOM, so that each aspect of product development is managed in context of the others. At every phase of the lifecycle, your entire team has the ability to view the E-BOM of each product that is in the development stage, so that you can avoid numerous, lengthy and costly change management processes later on or too close to deadline.

Going from an E-BOM (Engineering BOM) to an M-BOM (Manufacturing BOM) is now as simple as A, B, C.



**Dassault Systèmes
(Head Office)**

9, quai Marcel Dassault - BP 310
92156 Suresnes Cedex - FRANCE
Tel: 33 (0)1 40 99 40 99

**Dassault Systèmes
of America Corp.**

6320 Canoga Avenue
Trillium East Tower
Woodland Hills, CA
91367-2526 - USA
Tel: 1 818 999 2500

**Dassault Systèmes
Kabushiki Kaisha**

Pier City Shibaura Bldg 10F
3-18-1 Kaigan, Minato-Ku
Tokyo 108-0022 - JAPAN
Tel: 81 3 5442 4011



About Dassault Systèmes

As a world leader in 3D and Product Lifecycle Management (PLM) solutions, Dassault Systèmes brings value to more than 100,000 customers in 80 countries. A pioneer in the 3D software market since 1981, Dassault Systèmes develops and markets PLM application software and services that support industrial processes and provide a 3D vision of the entire lifecycle of products from conception to maintenance. The Dassault Systèmes portfolio consists of CATIA for designing the virtual product - SolidWorks for 3D mechanical design - DELMIA for virtual production - SIMULIA for virtual testing and ENOVIA for global collaborative lifecycle management, including ENOVIA VPLM, ENOVIA MatrixOne and ENOVIA SmarTeam. Dassault Systèmes is listed on the Nasdaq (DASTY) and Eurolist (n° 13065, DSY.PA) stock exchanges. For more information, visit <http://www.3ds.com>

CATIA, DELMIA, ENOVIA, SIMULIA, SolidWorks and 3D VIA are registered trademarks of Dassault Systèmes or its subsidiaries in the US and/or other countries.

Trademark:
© Dassault Systèmes, 2008. CATIA, DELMIA, ENOVIA, SIMULIA, SolidWorks and 3D VIA are registered trademarks of Dassault Systèmes or its subsidiaries in the US and/or other countries.

Business Partner / Reseller location



www.3ds.com