

WorkManager Integration for Microsoft® Office

WorkManager Integration for Microsoft Office (WM Office) integrates Microsoft Office documents with WorkManager for more effective and efficient document management.

Integrating Microsoft Office Documents with WorkManager

WM Office integrates files created using Microsoft Word®, Microsoft Excel® and Microsoft PowerPoint® with CoCreate WorkManager.

With WM Office you can easily manage MS Office documents, including instruction manuals, product and process specifications, memos, pricing information, or spreadsheets.

Together with other product information such as 2D drawings, 3D models and bills of materials a product can be fully described and captured within WorkManager.

Benefits

WM Office provides the following benefits:

- Rapid, intelligent document searching.
- High data integrity.
- Secure, highly structured data storage.
- Document revision and version tracking.

In addition WM Office allows automatic placement of attribute fields within document headers or footers. This adds additional information to the document such as part number and version to identify it as a controlled item.

From Template to Document

As well as being able to support existing documents into WorkManager, WM Office enables new documents to be created. These documents may be created from templates stored in WorkManager, or from Microsoft Office templates stored in your local file system.

When accessed, documents stored in WorkManager are automatically loaded into the appropriate program – Microsoft Word, Microsoft Excel or Microsoft PowerPoint – for viewing or editing. After modifying a document, you can store it again in WorkManager with a click of the mouse. It is also possible to view documents using an external viewer or browser.

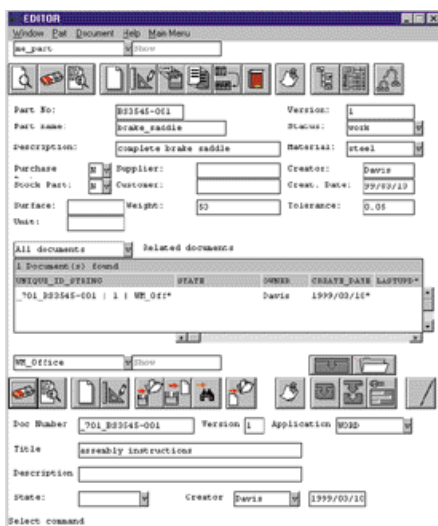
Leverage Document Attributes

You can insert cross-references to WorkManager attributes within your document or spreadsheet. These cross-references are automatically updated with the latest values each time you load a Microsoft Word or Microsoft Excel document from the database.

WorkManager attributes can be mapped to document properties such as title, author, subject or category. This allows the attributes to be reused by other applications. When importing documents from Microsoft Office into WorkManager, their properties can be used to define attribute values in the newly created WorkManager document. This eliminates time spent re-entering or retyping data. This is supported in Microsoft Word and Microsoft Excel.

Supported Environments

WM Office can be used with CoCreate WorkManager, or CoCreate SolidDesigner Design Management.



WorkManager Integration for Microsoft® Office

WorkManager Functions

WM Office solution enables all the functions expected from WorkManager.

These functions include:

- Reserve and load.
- Load.
- Load into viewer (Microsoft Office or external).
- New document from template stored in WorkManager.
- New document from Microsoft Office template.
- New document from blank page in the Microsoft Office application.

Supported Languages

- English
- German
- French
- Italian

System Requirements

- WorkManager 5.0 or later
- Microsoft Office 97 on Windows 98/NT®

Microsoft Office Functions

WM Office provides additional functions in the Microsoft Office application for storing documents in WorkManager and for handling attributes. The functions are:

- Bring WorkManager window into foreground.
- Store in WorkManager.
- Quick store.
- Store and close.
- Update attributes.
- Insert attributes.
- Show text references.
- Clear attributes.
- Reinstall menu bar.

For more information, please contact the following CoCreate offices or visit the CoCreate Web site:

<http://www.cocreate.com>

Headquarters Germany
Phone: (49) 7031-951-0

United States of America
Phone: (1) 888-262-7328

United Kingdom
and other European countries
Phone: (44) 1344-362091

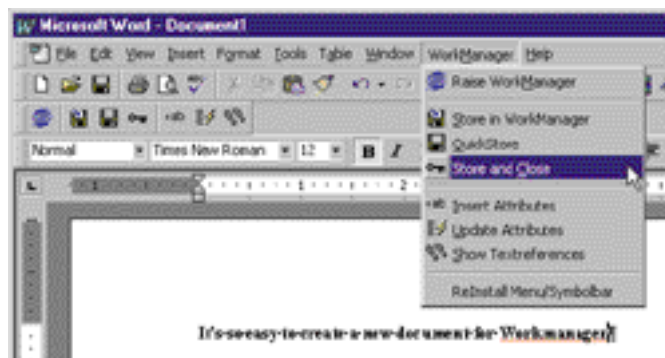
España
Phone: (34) 93-225-93-00

France
Phone: (33) 1-6964-8462

All rights to this documentation, including duplication, distribution and translation rights, are reserved. Right of technical modifications reserved.

This document is subject to change without notice.

© vexos software engineering GmbH & Co. KG, 1999
© CoCreate Software GmbH, 03/00
99-1011/WM011L



Windows is a registered trademark of Microsoft Corporation.
vexos is a registered trademark of vexos software engineering GmbH & Co. KG
WM Office is a licensed product from vexos software engineering.

Ordering Information

WorkManager Integration license for Microsoft Office

H5392AA001

Electronic manuals are available on CD-ROM media.

See also:

WM Office AccountSupport
WM Office PartnerSupport

H5386AS019

H5386PS019