



# SMARTEAM® – Gateway (GWY)

## Highlights

- **ENOVIA SmarTeam Enterprise Application Integration Backbone**
- **Integrating the latest product data across engineering, manufacturing, sales and service**
- **Enterprise business process management across the value chain**
- **Integration across organizational departments**
- **Bi-directional data exchange between SMARTEAM and EAI platforms**
- **Customization and enhancements**
- **Scalability**
- **Connectivity using EAI platform adapters**
- **Benefits of an enterprise Gateway Packaging**

### ENOVIA SmarTeam Enterprise Application Integration Backbone

With market responsiveness, cost control, and compressed cycle times becoming prime drivers in the ongoing product development and change processes, companies need to optimize their business procedures by linking Product Data Management (PDM) systems to other Enterprise applications, including Resource Planning (ERP), Manufacturing Planning (MRP), Customer Relationship (CRM) and other legacy systems.

### Integrating the latest product data across engineering, manufacturing, sales and service

SMARTEAM - Gateway serves as an interoperable backbone seamlessly integrating vital enterprise applications, enabling a higher level of business efficiency and profitability throughout the extended enterprise. SMARTEAM – Gateway exposes the SMARTEAM product information repository to Enterprise applications, through XML compliant Gateway channels, as well as through EAI Platforms, enabling businesses to share and exchange the most updated product data, including information about Parts, Bill of Materials, Change Processes and Documents, across engineering design, manufacturing logistics, customer service and other legacy systems - benefiting the entire extended enterprise.

### Enterprise business process management across the value chain

SMARTEAM - Gateway works seamlessly with the ENOVIA SmarTeam family of products and best-practices, bringing the benefits of collaborative product lifecycle management to other enterprise systems. Serving as the glue that ties the value chain together while enhancing efficiency throughout the product lifecycle, SMARTEAM - Gateway generates an “e-Business on demand” environment, by making all product data and business processes available to users of other enterprise systems.

### Integration across organizational departments

SMARTEAM - Gateway supports business event driven mechanisms for bi-directional data exchange, between enterprise systems in different departments, speeding workflows, avoiding redundant efforts, and improving communication throughout the organization. Updated product data in CRM systems, for example, enables more effective sales and improved product support, while facilitating the feedback of critical market information into the ongoing design process.

### Bi-directional data exchange between SMARTEAM and EAI platforms

Product information (BOM, Item Master, Documents, ECO) can be transferred bi-directionally based on built-in triggers or upon demand, supporting pre-packaged business logic for pulling information into SMARTEAM and pushing information to the EAI platform.

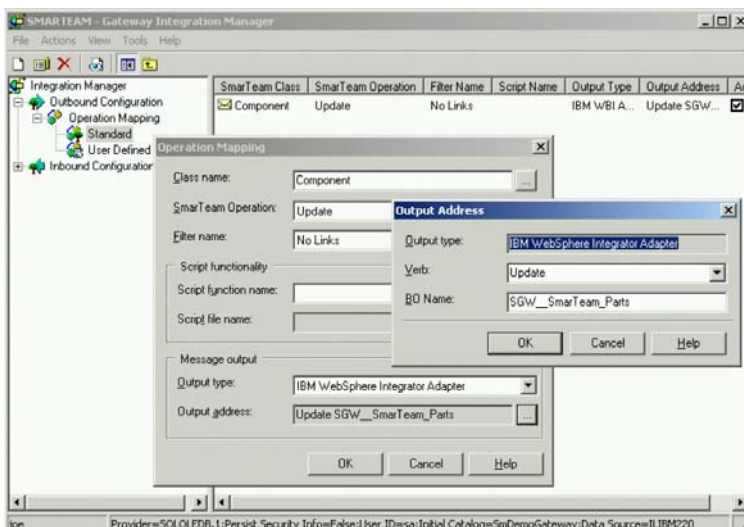
### Customization and enhancements

SMARTEAM - Gateway functionality can be enhanced using the internal SMARTEAM - Gateway Integration Manager capabilities (business logic, filtering, triggering of events) and by leveraging EAI platform capabilities (mapping tools, business process modeling, etc.).

### Scalability

SMARTEAM - Gateway, on top of EAI platforms, provides a scalable solution (scale up and scale out), supporting multiple servers and multiple server

Administrators set inbound and outbound rules for data exchange upon event triggers between SMARTEAM and the appropriate ERP application.



applications. SMARTEAM - Gateway supports operation failure, tracks information exchange, and provides rich administration capabilities.

### Connectivity using EAI platform adapters

By supporting universal EAI technologies, SMARTEAM - Gateway turns SMARTEAM into a highly robust Product Lifecycle Collaboration platform. The extended enterprise becomes tightly integrated around product processes and development, from conceptual drawings and CAD designs, and all the way through to realization, support and obsolescence.



SMARTEAM supports IBM® WebSphere® Business Integration (WBI), IBM WMQ and Microsoft® BizTalk® Server.

SMARTEAM - Gateway may be further leveraged by taking advantage of existing EAI adapters developed by SmartTeam's Business Partners, for connectivity with enterprise, legacy and other information sources and systems and technologies such as Seibel, PeopleSoft, PeopleSoft EnterpriseOne (formerly known as J. D. Edwards), QAD, BaanERP, Great Plains, i2, COM, J2EE, SMTP, XML, Microsoft Office, Microsoft SQL Server and others.

In supporting WBI, SMARTEAM – Gateway includes a WBI adapter, which is compatible with WBI Adapter Framework, and enables the connectivity to desired Enterprise applications through the various WBI "collaborations", and other WBI tools available in the market.

The adapter is metadata-driven to enable extensibility and development without recoding, and supports bi-directional asynchronous event processing (via SMARTEAM – Gateway).

### Benefits of an enterprise Gateway

Information is available across enterprise systems via EAI platforms:

- Speeding time-to-market
- Enabling efficient change processes
- Eliminating human errors
- Increasing product quality
- Reducing manufacturing costs
- Streamlining information flow between engineers and manufacturers
- Complying to universal EAI standards
- Enabling business process modeling

### Packaging

SMARTEAM – Gateway product is available only in the SMARTEAM – Gateway Administration Configuration (SGA), comprising of SMARTEAM – Foundation (FDN), SMARTEAM – Editor (EDR) and SMARTEAM – Gateway (GWY). SMARTEAM – Gateway configuration is licensed per server instance. Please notice also for Multi-site installations.

For a list of available MS BizTalk adapters, see: <http://www.microsoft.com/biztalk/evaluation/adapter/default.mspx>

For a list of IBM WebSphere WBI adapters, see:

<http://www-306.ibm.com/software/integration/wbiadapters/>

For more information, check our web site at:

[www.smarteam.com](http://www.smarteam.com)  
Or [www.3ds.com](http://www.3ds.com)

This document is for informational purposes only and is subject to change without notice.

© Dassault Systèmes, 2006. CATIA, ENOVIA, SMARTEAM and the 3DS logo are registered trademarks of Dassault Systèmes or its subsidiaries in the US and/or other countries.

Microsoft, Windows and BizTalk are registered trademarks of Microsoft Corporation in the United States and/or other countries.

IBM and WebSphere are registered trademarks of International Business Machines Corporation in the United States, other Countries, or both.

All other trademarks belong to their respective owners.

Rev. 09/06

Hardware Requirements	Software Requirements
<ul style="list-style-type: none"> <li>• Pentium IV 2.4 GHz or higher</li> <li>• Memory: 1GB or higher</li> <li>• Free disk space: 2 GB</li> <li>• Network Connection: 100 MB/sec NIC or higher</li> </ul> <p>Note: Based on workload, level of communication and volume of exchanged data, the Gateway Server may be installed on a dedicated machine.</p>	<ul style="list-style-type: none"> <li>• Microsoft Windows 2003 SP1 or 2003 R2 Standard or Enterprise Edition</li> <li>• SMARTEAM – Editor Configuration V5R17</li> </ul> <p><b>Middleware Integration choice:</b></p> <ul style="list-style-type: none"> <li>▪ IBM WebSphere business Integration (WBI): <ul style="list-style-type: none"> <li>- For BI Broker-based integration - WBI 4.3</li> <li>- For message-based integration, WBI MQSeries V5.3 or higher</li> </ul> </li> </ul> <p>Both rely on WBI Adapter framework, V 2.6.0</p> <ul style="list-style-type: none"> <li>• Microsoft BizTalk Server 2004 Standard Edition, Enterprise Edition, or Partner* Edition.</li> <li>• Microsoft SQL Server 2000 SP3 is required for Microsoft BizTalk</li> <li>• Microsoft Windows Server Windows 2003 SP1 or 2003 R2 Enterprise Edition or Standard Edition</li> </ul>

- System administrator with knowledge of IBM WBI or Microsoft BizTalk Server is required for implementation and maintenance

- BizTalk Partner Edition requires MSDE only. For additional information on BizTalk:

<http://www.microsoft.com/biztalk>

- Based on selected integration topology, SMARTEAM - Gateway can be used without middleware.

- For complete system requirements, see HW/SW Requirements document