



# SMARTEAM® – SA Adapter (SAA)

## Highlights

- **Integrating the latest product data across engineering, manufacturing, sales and service**
- **Universal EAI platform adapter**
- **Bi-directional product data exchange between SMARTEAM and SAP R/3 product definition modules**
- **Item Master data transfer**
- **Bill of Materials data transfer**
- **Document data transfer**
- **Document structure data transfer**
- **File transfer from SMARTEAM Vaults to SAP storage**
- **Supports SAP Classification for Item Master and Documents**
- **Open interfaces to be used in Business Process Modeling applications and tools**
- **Customization and enhancements**
- **Benefits of an enterprise Gateway**
- **SAP R/3 Support**
- **Packaging**

### Integrating the latest product data across engineering, manufacturing, sales and service

Bringing the benefits of product lifecycle collaboration solutions to SAP R/3, the SMARTEAM – SA Adapter tightly integrates product processes and development from conceptual drawings and CAD designs, and all the way through to realization, support and obsolescence, enabling a higher level of business efficiency and profitability throughout the extended enterprise. SMARTEAM – SA Adapter exchanges mission-critical data via two-way data linkage between SMARTEAM product data repository and SAP R/3, eliminating human error, speeding time-to-market and reducing manufacturing costs.

Working seamlessly with the SMARTEAM family of products and best-practices, the SMARTEAM – SA Adapter serves as the glue that ties the value chain together, enabling businesses to share and exchange the most updated product data, including information about Parts, Bills of Material, Change Processes and Documents, across engineering design, manufacturing logistics, customer service and other legacy systems - benefiting the entire extended enterprise.

### Universal EAI platform adapter

Supporting universal EAI technologies, such as BizTalk® Server, and certified by SAP AG, SMARTEAM – SA Adapter is the SmartTeam Corporation's adapter to SAP R/3, sold as an Add-On to SMARTEAM® – Gateway.

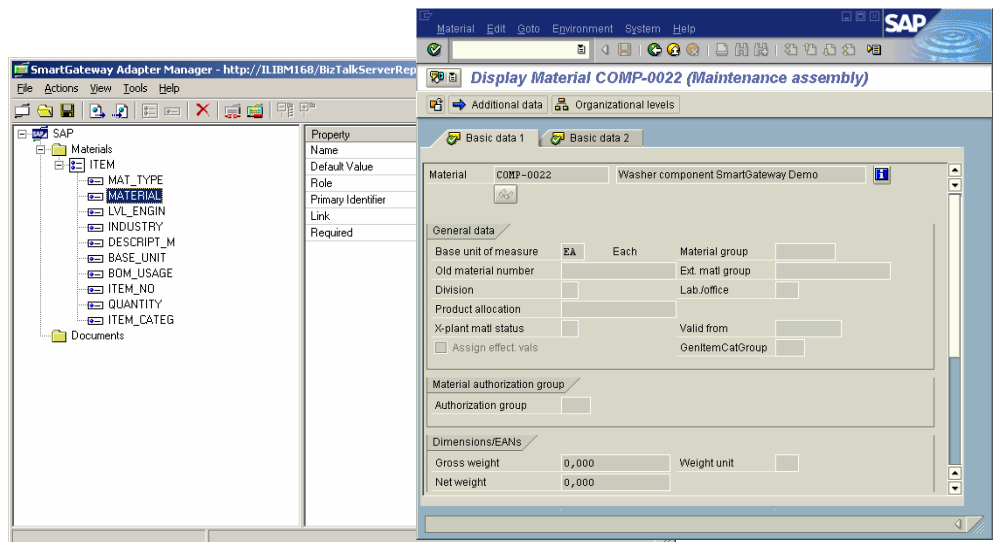
### Bi-directional product data exchange between SMARTEAM and SAP R/3 product definition modules

Providing built-in integration capabilities to be used in concert with SMARTEAM - Gateway services, the SMARTEAM - SA adapter supports the transfer of Documents, Document Structures, Item Masters, Bills of Material, supporting ECO and SAP classification, using SMARTEAM - Gateway Outbound and Inbound channels. The SA Adapter can be configured to support different options of transferring data (i.e. create new items, only update, supporting classification, SAP storage, etc.)

### Item Materials data transfer

SMARTEAM – SA Adapter transfers Item Materials data from SMARTEAM to SAP, and updates data in SMARTEAM according to the SAP Load mode, as well as through the SMARTEAM – SA Adapter Inbound channel. Adapter options can be configured to support this process, differentiating between create and update only. The Internal/External SAP numbering option

Viewing SMARTEAM Objects in SAP R/3 as a result of the mapping



is also supported. SAP classification is supported.

### Bill of Materials data transfer

Bill of Materials (BOM) can be transferred in both directions using the Outbound and Inbound Gateway channels. The SAP Adapter can manage BOMs in SAP using both internal and external operation sequence assignment (SAP Options: With Item Number and Without Item Number).

### Document data transfer

Document information can be transferred with "Create" or "Overwrite" options. Classification parameters can be added when defining Documents in SAP.

### Document structure data transfer

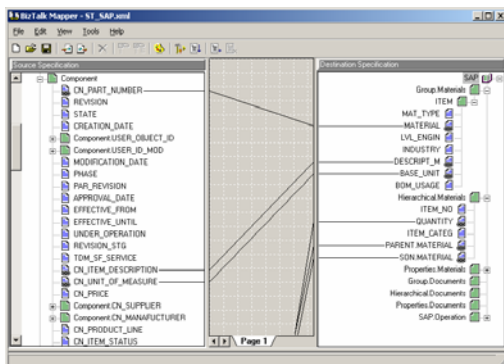
The SMARTEAM – SA adapter supports transferring of document structure from SMARTEAM (i.e. CAD document structure) to SAP R/3 4.5 and higher.

### File transfer from SMARTEAM Vaults to SAP storage

Document files can be transferred from the SMARTEAM Vault Servers, as defined in SMARTEAM – Foundation, to SAP storage system. Also, the SA Adapter can be configured to support different data transfer options, such as "create new items", "only update", etc.

### Supports SAP Classification for Item Master and Documents

SMARTEAM - SA Adapter supports the transfer of SAP Info Records and Classification data.



Mapping the SMARTEAM – Gateway Schema to SAP R/3 Schema using Microsoft BizTalk.

### Open interfaces to be used in Business Process Modeling applications and tools

The SMARTEAM - SA Adapter interfaces- exposed in COM after the binding of the adapter interface-- can be used for automating complex business processes and tasks. The COM interface supports improved implementation of BizTalk Orchestration. (Business Process Modeling integration).

### Customization and enhancements

SMARTEAM - SA Adapter functionality can be enhanced using the internal SMARTEAM - Gateway Integration Manager capabilities (business logic, filtering, triggering of events) and by leveraging EAI platform capabilities (mapping tools, business process modeling, etc.).

### Benefits of an Enterprise Gateway

Information is available across the enterprise:

- Speeding time-to-market
- Enabling efficient change processes
- Eliminating human errors
- Increasing product quality
- Reducing manufacturing costs
- Streamlining information flow between engineers and manufacturers
- Complying to universal EAI standards
- Enabling business process modeling

### SAP R/3 Support

The SMARTEAM - SA Adapter is leveraged on top of both BAPI and CAD Dialog SAP R/3 interfaces, supporting SAP R/3 systems from 2.1 to 4.6 versions. Some functionality is supported only in versions 4.5 and 4.6.

### Packaging

SMARTEAM – SA Adapter is an Add-on product to SMARTEAM – Gateway, and is available only in the SMARTEAM – Gateway Administration Configuration (SGA).

For more information, check our web site at:

[www.smarteam.com](http://www.smarteam.com)

Or

[www.ibm.com/solutions/plm](http://www.ibm.com/solutions/plm)

This document is for informational purposes only and is subject to change without notice.

Copyright © 2001-2005 SmarTeam Corporation Ltd. All rights reserved. SMARTEAM is a registered trademark of SmarTeam Corporation Ltd.

Microsoft, Windows and BizTalk are registered trademarks of Microsoft Corporation in the United States and/or other countries.

SAP and R/3 are trademarks or registered trademarks of SAP AG in Germany and in several other countries all over the world.

All other trademarks belong to their respective owners.

Rev. 05/05

#### Hardware Requirements

- Dual Processor - Pentium III 700Mhz or higher
- Memory: 1 GB or higher
- Free disk space: 750 MB
- Network adapter card 100 MB/sec NIC or higher

#### Software Requirements

- Microsoft Windows 2000 Server SP3 or 4, or Windows 2003 Enterprise Edition, or Standard Edition
- SMARTEAM – Gateway V5R14
- **Middleware Integration:** Microsoft BizTalk Server 2002 SP1 Standard Edition, or Enterprise Edition or Partners Edition
- SAP R/3 client, version 2.1 to 4.6

- The SMARTEAM – SA Adapter is applicable only on the Microsoft BizTalk Server platform.-

- Please be aware of minimal SAP R/3 system requirements

- System administrator with knowledge of MS BizTalk Server and SAP R/3 is required for implementation and maintenance. Read more <http://www.microsoft.com/biztalk>

- Please refer to the SMARTEAM – Gateway Functional Spec and SMARTEAM - Gateway Installation Guide for additional information.

- Different variables may affect system requirements. Specific configuration will be defined per customer.

\*Refers to R14SP5