

SAP® Process Adapter

Linking engineering and manufacturing

The SAP Process Adapter offers a tightly integrated communication interface between the OneSpace Solution Suite and SAP's enterprise resource planning (ERP) system, SAP R/3®. This interface allows SAP R/3 data to be used within OneSpace, and also to be shared with SAP.

A Complete Solution

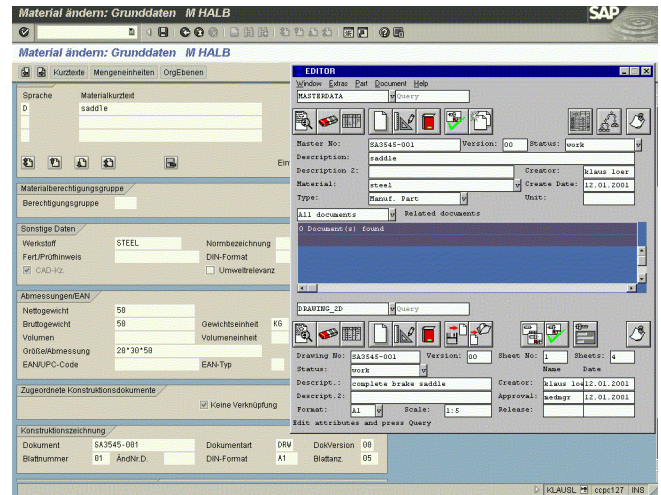
SAP R/3 is a leading system for enterprise-wide management of products and materials. The SAP Process Adapter integrates the OneSpace Solution Suite with existing SAP enterprise systems to create a fully collaborative product design environment without disruptions to existing processes.

Comprehensive Functionality

The SAP Process Adapter offers an infrastructure for communicating and sharing data between engineering, manufacturing and logistics teams. It incorporates all relevant functionality, including the ability to manage parts, materials, documents and bills-of-materials (BOMs). This is done via an intuitive user interface, pre-configured for the design environment.

Management of Parts and Materials

With the SAP Process Adapter, the designer has all the functionality needed to manage SAP materials and the relation to design information within the OneSpace repository. This functionality allows match code queries to be addressed in SAP and gives access to SAP's structure editor, material master, and classification. It also allows materials to be reserved, created, changed or updated in accordance with engineering information inside the OneSpace repository.



Document Management

The SAP Process Adapter enables SAP document masters to be shown, created or modified. It also supports the transfer of related files from the OneSpace repository to the SAP solution. References to files can be included, allowing related documentation from SAP R/3 to be viewed.

Bills of Materials

For better management of BOMs, the BOM capability of the SAP Process Adapter allows the user to create, show or modify SAP BOMs, and also to transfer BOMs from the OneSpace repository to SAP R/3. Graphical comparisons of the two systems' BOMs can also be carried out, making information-handling more efficient and enabling designers to fully understand the effects of any changes.

Customization

Companies can customize the SAP Process Adapter to meet their specific business requirements. Customization can be done using remote function calls (RFCs), dialog RFCs of SAP's CAD AIP, or the C-API.

SAP® Process Adapter

Flexible Integration Offering

CoCreate offers flexible SAP integration solutions. SAP Process Adapter is the recommended solution for a company that:

- Selects SAP R/3 as the ERP system of choice.
- Needs to integrate the OneSpace Solution Suite with SAP R/3.
- Focuses on optimized product development processes.
- Needs to integrate multiple engineering applications.
- Is looking for consistent management of information.

Benefits

- Concurrent access to design, engineering, procurement and manufacturing information
- Faster and more secure data transfer from engineering to manufacturing
- Reduction of maintenance costs for material masters and BOMs

Functionality Overview

Material masters

- Match code queries of SAP R/3 data
- Access to SAP structure editor
- Access to SAP classification search
- Creating of new material numbers in SAP
- Automatic update of OneSpace and SAP R/3 data according to the defined masters
- Modification of material masters

Windows 2000, Windows NT, and Windows XP are registered trademarks of Microsoft Corporation.
HP-UX is a registered trademark of Hewlett-Packard Corporation.
SAP and R/3 are registered trademarks of SAP AG.

- Direct access to the SAP material-master graphical user interface (GUI)

Document masters

- Showing, creating and modifying document masters
- Transfer of files from OneSpace to the SAP vault
- Direct access to the SAP document-master GUI

Bills of materials

- Showing, creating (within SAP) and modifying BOMs
- Access to SAP structure editor
- Performing graphical BOM comparisons
- Direct access to SAP GUI

Engineering workflow

- Generating ECNs within SAP
- Assigning project folders to SAP ECNs
- Direct access to SAP GUI

System Requirements

SAP Process Adapter is supported on

- HP-UX 11.0
- Windows 2000
- Windows NT4
- Windows 98
- Windows ME
- SAP R/3 (v.3.1 or greater)

Ordering Information

SAP Process Adapter

C700

SAP Process Adapter Support

C700A

Electronic manuals are included with the OneSpace media.
Software is available under www.cocreate.com for download.

Co|Create

For more information,
please contact the following
CoCreate offices or visit:
www.cocreate.com
www.cocreate.com/eSupport

Europe
Phone: +49 (7031) 951-2222

USA
Phone: +1 (970) 267-8000
Toll free: +1 (888) CoCreate

Japan
Phone: +81 (42) 352-5654

Taiwan
Phone: +886 (227) 783255

Korea
Phone: +82 (2) 559-0711

Singapore
Phone: +65 (6550) 9665

All rights to this documentation, including
duplication, distribution and translation
rights, are reserved.
Right of technical modifications reserved.
© CoCreate Software GmbH & CO. KG,
01/03

C700_E_2002+