

## Onespace Manager : CSI PDM Integrator - for SolidWorks®

The Engineering Design Management Solution for SolidWorks® Users

### Design Management

This solution provides Design Teams using SolidWorks® the ability to store, retrieve, manage, and control access to parts, assemblies and drawings with CoCreate's Design Management solution, scalable from Design Management to Enterprise PDM including read only or read/write WEB Clients.

### Enterprise PDM Integration

Designed to optimise design and revision life cycles, decrease time to market, and control access and modification permissions based on the current state of part/document and your user/group privileges.

### Increased Productivity

Projects with large amounts of design data are managed by a powerful set of features to greatly increase workgroup productivity, and provide mechanisms to aid ISO9000 control and traceability.

Design Management saves valuable time by answering such questions as:

- \* Where is this part or assembly used?
- \* When was the data last modified and by who?
- \* What models, drawings and documents are used on this project and who is working with them?
- \* What is the current status of a part, assembly, drawing or document?

And eliminates the need to ask:

- \* Where is the drawing and model for this part stored?
- \* Can I update this part or assembly?

### Concurrent Engineering

Users can share data between design teams and individuals simultaneously using OneSpace Managers project management capabilities.

### Bill of Materials

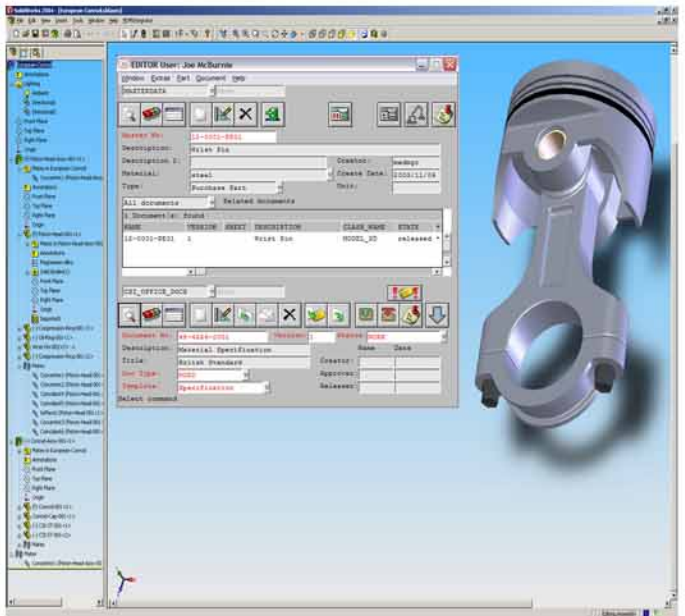
Automatic transfer of BOM structures from SolidWorks® to OneSpace Manager including support of non-drawn parts.

### 'Out of the Box'

This solution is available out of the box without the usual consulting overhead associated with other Design Management and PDM systems.

However, CoCreate's OneSpace Manager is a highly configurable product, which can be tailored to meet specific customer business logic requirements such as auto-part numbering; MRP integration; specialized report production; remote access; legacy data import.

Concurrent System's OneSpace manager integration provides a valuable and time saving fourth dimension to any SolidWorks® installation.



### Office Document Management

This solution also provides integration to most other single Windows document format such as WORD, EXCEL or AutoCAD. The document management integration applies standard controls such as who can create, store or modify a document dependant on the current work state of the document and user permissions. For instance if a document is released you will only be given the options to create a new document or a new version of the document.

### CSI PDM Integrator

Onespace Manager : PDM integrator is a multi-CAD heterogeneous environment that supports Pro/ENGINEER®, Solidworks®, and autodesk Inventor® Series engineering design solutions